

Hancock County: Comparison of Effective BFEs to Advisory BFEs

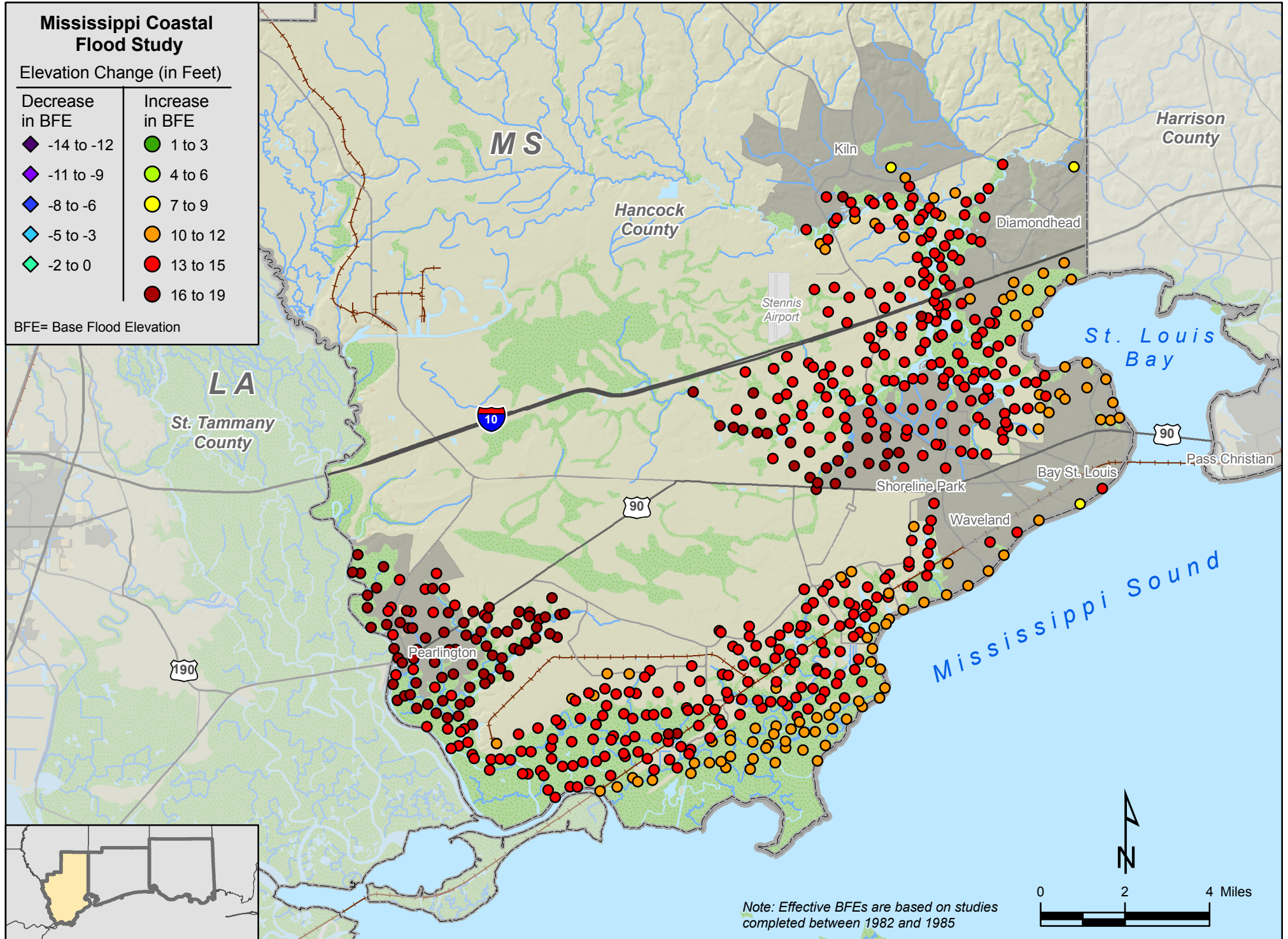
10/30/2007

Mississippi Coastal Flood Study

Elevation Change (in Feet)

Decrease in BFE	Increase in BFE
◆ -14 to -12	● 1 to 3
◆ -11 to -9	● 4 to 6
◆ -8 to -6	● 7 to 9
◆ -5 to -3	● 10 to 12
◆ -2 to 0	● 13 to 15
	● 16 to 19

BFE= Base Flood Elevation



Note: Effective BFEs are based on studies completed between 1982 and 1985

